

NTQA PROGRAM



ZOOM



Zoom is the magnification of an ultrasound image.

There are two types of zoom on an ultrasound machine: read zoom and write zoom.

Reduce the depth first to move the area of interest closer, and then zoom

Write Zoom

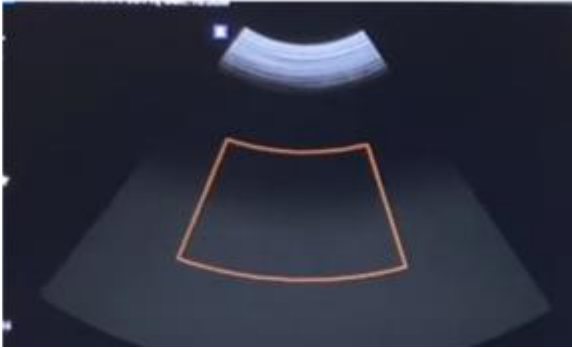
- pre-processing function
- live - dynamic function that allows the user to select an area of interest within the image and zoom in
- image resolution is maintained
- improved frame rate - reduced number of lines of sight

Read Zoom

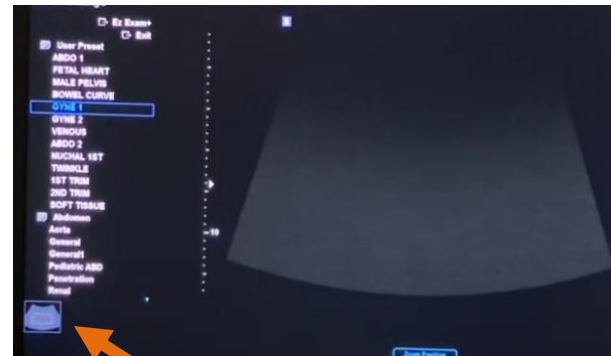
- post-processing function
- magnifies an area of a frozen/stored/saved image
- degrades picture with more prominent pixels

Avoid post freeze zoom

ZOOM



Write Zoom Box in Place



Write Zoom Activated

Check the type of zoom available in your machine in order to assess how much zooming can be done without compromising image quality



<https://youtu.be/pCH1PAtnQ?si=77WJibQgxtiYIg1u>

ZOOM

CRL

- make the fetus as large as possible before freezing the image
- ensure the entire fetus is clearly demonstrated



<https://nuchaltrans.edu.au/documents/crl>

NT

- the head and chest should occupy the majority of the screen, without cut off
- the image must be centered to the screen



<https://nuchaltrans.edu.au/documents/protocols-for-measuring-the-nt>

Questions?

Contact us:

Website: <http://www.prenatalscreeningontario.ca/>

Email: sburnettroy@BORNOntario.ca ps@bornontario.ca

Phone: 1-833-531-6490